

Press information

Elo – precise light, purist shape

New family of bollard luminaires with the Tritec module



Precise light, a purist design and high efficiency – the Elo is a new family of state-of-the-art LED bollard luminaires by Selux.

Selux is introducing a new cylindrical bollard luminaire with a highly attractive minimalist design for illumination of paths, entrance areas and access roads for buildings. With its reserved yet striking appearance by day and night, the Elo provides uniform lighting at comparatively low heights. Like an elegant signpost, its balanced, soft light is emitted on all sides or in a forward direction providing safety and guidance. The Tritec module's combination of prism ring lens and hexagonally structured reflecting sphere provides maximum anti-glare with a premium quality look and distinctive aesthetic that is also visible from afar.

With Tritec technology already available in the Lif light column or as a stand-alone replacement module for existing luminaires, the Elo now sees Selux also introducing a new bollard luminaire with Tritec. Reduced consistently to a cylindrical shape, with its design clarity and timeless elegance, the Elo bollard is a highly impressive sight, its reduced design enabling it to blend harmoniously into a wide range of styles and architectural contexts. The new Elo bollard has a high level of compatibility with the cylindrical Lif light column while also blending in superbly with many other Selux models. This enables lighting solutions to be planned with the Elo bollard that combine the widest variety of luminaire types using one harmonious design language.

Manufacturer contact:

Manuela Schnabel, Head of Marketing/Communication, Selux AG, Motzener Straße 34, 12277 Berlin, Germany
T +49 30 72001-246, m.schnabel@selux.de, www.selux.com

The Elo family includes versions with heights of 800 mm, 1000 mm or 1200 mm. The Tritec module with the LED light source and cooling element are surrounded by a cylindrical PC moulded body and aluminium die-cast housing. The steel lining tube comes with or without a door and can be installed either on a plinth or on a separate buried base. Depending on the lighting task, Tritec modules are available with symmetrical 360-degree beaming or forward light distribution. With a connection power of 14 W, they supply a luminous flux of 1500 lm or 1200 lm. For light colours, Selux offers 3000 K or 4000 K as standard and the Elo bollard can be switched and dimmed using a DALI interface. Use of intelligent control systems enable individual and precise light control.

November 2017
www.selux.com

About Selux

The Selux Group is a leading provider of sustainable lighting solutions for both interior and exterior applications. Acting sustainably enables Selux to maintain high standards when it comes to energy efficiency, ergonomics and product design. Founded in Berlin in 1948, Selux is today a global operation employing 565 staff at sites in Europe, North America and Australia. Examples of well-known that Selux has been involved in the past include the „Park am Gleisdreieck in Berlin, the Porsche Museum in Stuttgart, the Vieux-Port in Marseille and the 9/11 Memorial in New York.

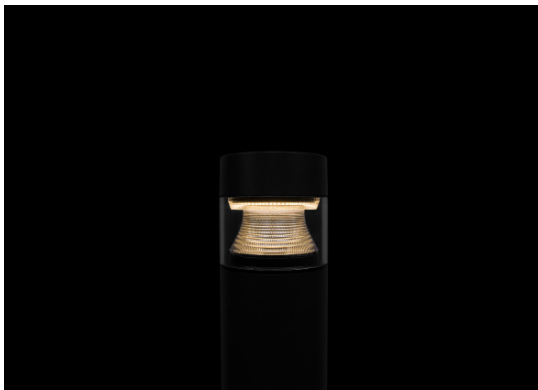
LED bollard luminaires / Photos: Selux



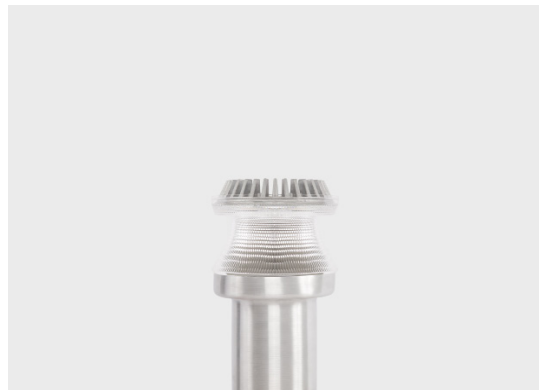
01 Selux is introducing a new cylindrical bollard luminaire with a highly attractive minimalist design for illumination of paths, entrance areas and access roads for buildings.



02 The Elo family includes versions with heights of 800 mm, 1000 mm or 1200 mm.



03 The Tritec module's combination of prism ring lens and hexagonally structured reflecting sphere provides maximum anti-glare with a premium quality look and distinctive aesthetic that is also visible from afar.



04 With Tritec technology already available in the Lif light column or as a stand-alone replacement module for existing luminaires, the Elo now sees Selux also introducing a new bollard luminaire with Tritec.

Manufacturer contact:

Manuela Schnabel, Head of Marketing/Communication, Selux AG, Motzener Straße 34, 12277 Berlin, Germany
T +49 30 72001-246, m.schnabel@selux.de, www.selux.com